

Attic Inscriptions: Education

3. People in Ancient Greece

People in Ancient Greece

Ancient Greeks depicted people in range of different ways and jobs.

Can you guess what these people did with their lives?

Why was it important for the Greeks to show people in this way?

Can you think of similar examples from today?

Erasippos

From Athens (now at the British Museum in London).

Why do you think he is shown leaning on his stick?

How old do you think he is?



Xanthippos

From Athens (now at the British Museum in London).

What did he do for a living? Who might have helped him?



Aristokles

From Athens (now at the British Museum in London).

What is he doing and what might it say about him and his background?



Unnamed

From Athens (now at the British Museum in London).

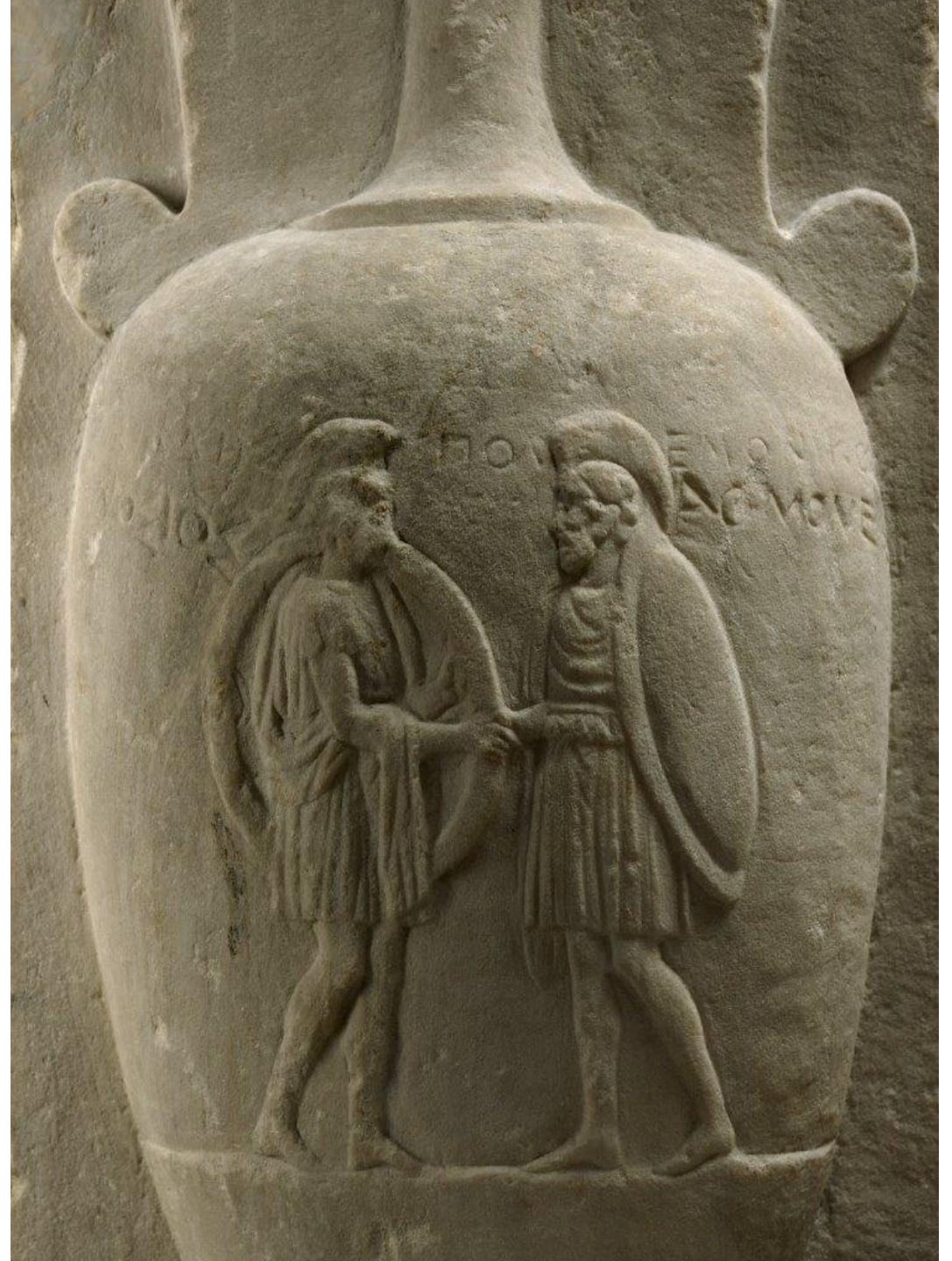
Why would these people choose to be shown together in this way?



Archeades and Polemonikos

From Athens (now at the British Museum).

What do you think these men are doing? What equipment do they have?



Choirine

From Athens (now at the British Museum in London).

Her name means 'Piglet'.

She is carrying a key of the type that would lock temples. What might her job have been?



Jason.

Now at the British Museum.

Jason sits and places his hand on the belly of a smaller figure.

To their right is a 'cupping vessel', used by doctors.



Archagora

From Athens (now at the British Museum in London).

What are these people doing?

Do you think they are wealthy?



Glykilla.

From Greece (now at the British Museum in London).

Her servant seems to be taking something out of a box.

What could it be?



Synphoron

From Athens (now at the British Museum in London).

She holds a fan made out of a leaf in her right hand.

She holds a book scroll in her left hand?

What might these things say about her?



Kallimachos.

Now at the Great North Museum,
Newcastle.

His name means 'Good Fighter'.

What do you think he did in life?

Note the spear, and the hood
behind his head.



Images Copyright

© Trustees of the British Museum; © The Fitzwilliam Museum, Cambridge; © The Ashmolean Museum, Oxford; © National Trust; © *Forschungsarchiv fuer Antike Plastik*, Koeln; © Tyne and Wear Museums.